

Couesnon Brass Instrument Dating Chart

<u>Serial#</u>	<u>Year</u>	<u>Instrument</u>	<u>Model</u>	<u>Notes</u>	<u>Vlv 2 Mark</u>	<u>C-Pinky Ring?</u>	
none	1922	Cornet		C&Cie, S lead pipe, made for L&H Chicago		N	
none	1924	Cornet		C&Cie, 24 in pineapple			
none	1924	Trumpet		C&Cie, 24 in pineapple		N	
none	1924	Trumpet		C&Cie, 24 in pineapple		N	
none	1927	Trumpet		C&Cie, 94 address, 27 in pineapple		N	
none	1927	Cornet		C&Cie, 94 address, 27 in pineapple		N	
none	1929	Trumpet		C&Cie, 94 address, 29 in pineapple		N	
none	1930s	Trumpet	Lafayette	C&Cie, 1930s case		N	
	1937	Couesnon address changes to 105 rue Lafayette					
none	c1938	Trumpet		large C, 105 address, round pinky ring		N	
none	1940	Trumpet		C&Cie, 40 in pineapple		N	
none	1945	Trumpet		C&Cie, 105 address, 45 in pineapple	N		
none	1940s	Trumpet	Richmond	C&Cie, reverse 3 rd slide, 1940s case			
	After WWII name change from Couesnon & Cie to just Couesnon						
none	1947	Trumpet		C-Paris, 105 address, 47 in pineapple		N	
none	1948	Trumpet		C-paris, 105 address, 48 in pineapple, large C		N	
none	1951	Trumpet		C-Paris, 105 address, 51 in pineapple		N	
none	1956	French Horn		large C-Paris, 56 in pineapple			
none	1960s	Trumpet		large C		Y	
none	?	Trumpet	Alcazar	C&Cie	X		
666	1932	Trumpet	Mono-Cons	C&Cie, 32 in pineapple		N	
2207		Trumpet		large C-Paris, 105 address		N	
5235		Trumpet	Paramount	looks like 1930s		N	
5255		Trumpet	Mono-Cons	C & Cie		N	
5297	1937	Tuba	Eb	37 in pineapple on bell, C&Cie, 4vlv			
5813		Trumpet	Gautrot	Eb, 105 Lafayette address so after 1937			

5962	1938	Fluegel	Monopole	C&Cie, 38 in pineapple		
12615	1949	Fluegel	Mon-Conservatoire			
12936		Trombone	Monopole	C&Cie, valves		
17496		Fluegel	Monopole	Couesnon & Cie, full bell engraving		
16512		Trumpet	Mono-Star			
19470		Fluegel	Monopole	C&Cie		N
20228		Cornet	Monopole	C&Cie, Beaux Arts, 94 address		N
20582		Trumpet	New Star	C-SA, Special, unique engraving looks modern		
21470		Cornet	Monopole	C&Cie		N
22017		Trumpet	Monopole			N
23315		Fluegel	Mon-Cons	star at bottom of bell engraving		
24818	1955	Fluegel		55 in pineapple on bell		
26504		Cornet	Mono-Cons	C&Cie, 94 address		N
28292		Trumpet	Lafayette	C-Paris		N
28625		Cornet	Monopole	C&Cie, 94 address		Y
28865		Trumpet	Mono-Cons	large C in name, star at bottom of bell engraving		
29181		Trumpet	Mono-Cons	large C-Paris		
29939		Trumpet	Mono-Cons	large C-Paris	B	N
30122		Fluegel	Monopole	2 pc bell		
30531	1921	Fluegel		C & Cie, full engraving, 21 in pineapple		
30738		Euphonium	Mono-Cons	star on bell, 4vlv, large C-Paris		
30758		Trumpet				
31162		Trumpet	Lafayette	C-Paris		N
32794		Trumpet	Mono-Cons			N
33616		Trumpet	Renault			Y
33864	1922	Fluegel	Monopole	C&Cie, 22 in pineapple	11	N
34267		Cornet	Monopole	C&Cie		
35358		Trumpet	Mono-Cons	large C-Paris, 1 st slide trigger		N
35619	c1970	Trumpet	Monopole	large C-Paris, 1 st trigger, warranty card signed by Ludovic Vaillant and mentioning		

that he is the professor of trumpet at the Paris Conservatory of Music (which he was 1957-1974) and is a soloist with the French National Radio Orchestra with “Ex” added by hand before that so possibly recently retired from that (he played with them in 1958 so the card was signed after then)

36450	1923	Fluegel	Monopole	C&Cie, Eb		N
37364	1923	Fluegel	Monopole	C&Cie, 23 in pineapple		N
39056		Trumpet	Lafayette	C-Paris		N
39294		Trumpet	Mono-Cons	large C-Paris, key of C, star in engraving		Y
39458		Trumpet	Renault	C-Paris		N
39572		Cornet	Mono-Cons	large C-Paris		Y
39661		Fluegel	Mono-Star			
39939	c1980	Trumpet	Mono-Star	in C; modern snail logo c.1980 (see below)		N
40064		Trumpet	Mono-Cons	large C-Paris, star on bell		N
40068	1924	Cornet	Monopole	C&Cie, “24” in pineapple on bell		
40222		Fluegel	Monopole	3 rd trigger	B	
40470	1926	Fluegel		“26” in pineapple on bell		
40484		Fluegel	Mono-Star			
40486		Fluegel	Mono-Star	1970s case, 1 pc bell, 3 rd slide trigger	B	Y
40826		Trumpet	Monopole	C-Paris		N
40829		Trumpet	Monopole	in D		N
40998		Fluegel	Mono-Star	1970s case		
410xx		Fluegel	Triebert Moderne		B 140	
41032		Trumpet	Mono-Star	C-Paris		N
41074		Fluegel	Triebert Moderne	used in 1982	B 140	
41118		Fluegel	Monopole			
41120		Fluegel	Triebert Moderne			
41259		Fluegel	Mono-Star	1 pc bell		
41260		Fluegel	Triebert Moderne	D10 on slide	B 140ST	
41414	1978	Fluegel	Mono-Star	new in 1978		
41439		Fluegel	Triebert Moderne			

415xx		Fluegel	Triebert Moderne		N 140		
41523		Pic Tpt	Mono-Star	C-paris			
41861		Fluegel	Triebert Moderne, 2pc bell				
41876		Fluegel	Triebert Moderne				
42079		Pic Tpt	Triebert Moderne			N	
42276		Fluegel	Monopole	1pc bell			
42310		Fluegel	Monopole	30D on slide	B		
42644		Trumpet	Monopole	in D, C-Paris		N	
42947		Cornet	Monopole	C-Paris, 1970s case		N	
43077		Fluegel		3 rd trigger			
43349		Fluegel	Monopole	3 rd trigger			
46257		Trumpet		large C-Paris, bottom water key		Y	
48450		Cornet	Lafayette				
49565	1927	Fluegel	Monopole				
49101		Fluegel		S 85 N on inlet			
50479		Tuba		large C-Paris			
51281	1928	Cornet	Monopole	C&Cie, 28 in pineapple		N	
51474		Cornet		C-Paris, 105 address		N	
51866		Cornet		large C-Paris		Y	
52389		Fluegel (these later ones often have "Coesnon Paris" on bell with no model)					
52729		Fluegel					
52789		Fluegel					
52874		Fluegel					
54577		Fluegel					
55xxx		Fluegel			D		
55954		Fluegel					
56160		Trumpet	Lafayette	C-Paris			
56426		Fluegel	Monopole	N on inlet	C		
56521		Fluegel		C-Paris	N		

56532		Fluegel		C-Paris, 2pc bell, bottom sprung valves			Y
56802	c1964	Fluegel	2155				
58770		Fluegel				D	
58857	c1930	Trumpet	Monopole	C&Cie, 94 address, Beaux Arts, pre-1937			
59086		FLuegel		C-paris, 2pc bell			Y
59095		Fluegel	2155				
59522		Fluegel	2155	sold by Gretsch			
59523		Fluegel				B	
60945	1931	Cornet		C&Cie, 31 in pineapple on bell			
61169		Trumpet	Lafayette	C-Paris			N
62302		Trumpet		large C-Paris			Y
62560		Fluegel					
62719		Trumpet		large C-Paris, bottom water key			Y
63242	1967	Fluegel		said to be new in 1967		B	
63244		Fluegel				N	
63652		Fluegel				N	
65293		Fluegel		BbD22 on inlet		D	
66600		Trumpet	2125	Mono-Cons,		D	Y
66995		Fluegel		BbD5 on inlet		D	
68290		Trumpet		large C-paris, double slide brace			Y
68354		Fluegel		X on inlet		3	
68382		Fluegel	2155	C-Paris, Gretsch paperwork		N	Y
69615		Trumpet		large C-paris, modele depose valves			Y
69797		Trumpet	Renault	large C-Paris			Y
69815		Fluegel					
69846		Fluegel				B	
69965		Fluegel				B	
69978		Fluegel					
70252		Trumpet		large C-Paris			Y

70627		Trumpet		large C-Paris, double slide brace		Y
70799		Trumpet		double slide brace, bottom water key		Y
70857		Trumpet		large C-Paris, double slide brace		Y
71280		Fluegel		X on inlet	N	
71523	1969	Fluegel		used in 1976	B	
71774		Fluegel				
72073		Fluegel		C-paris, 2pc bell		Y
72334		Fluegel		C-Paris		Y
72580		Fluegel	Star		N	
72690		Fluegel				
72714		Fluegel			N	
72737		Fluegel				
72807		Fluegel				
73037		Trumpet		single slide brace, front water keys		Y
73054	c1963	Fluegel		C-Paris, trigger, owned by Roger Ingram		
73216		Fluegel		C-Paris		Y
73307		Fluegel	Star	217 on slide	B	
73358		Fluegel	2155		D	
73569		Fluegel			D	
73710		Fluegel				
73712		Fluegel				
73771		Fluegel				
73995		Fluegel			N	
74037		Fluegel	Star			
74043		Trumpet		large C-Paris	A	Y
74050		Fluegel	Star		N	
74073		Fluegel				
74086		Fluegel	Star			
74131		Fluegel	Star	2pc bell	N	Y

74133		Fluegel					
74178	1969	Fluegel	2155	said to be new March 1969			
74228	c1970	Fluegel					
74240		Fluegel				N	
74488		Fluegel	Star	233 on slide		B	
74876		Fluegel		C-Paris		B	Y
75098		Trumpet		large C-Paris			Y
75146		Fluegel				B	
75155		Fluegel				B	
75257		Trumpet	Star	C-Paris, 1 st trigger, single slide brace			Y
75494		Cornet	Star	C-Paris			N
75575		Fluegel					
75597		Fluegel				A	
75609		Fluegel		3 rd vlv trigger		A	
76xxx	1975	Fluegel	Star			X	
76054		Tuba		large C-paris			
76061		Fluegel				A	
76328		Fluegel		C-Paris, used in 1987		X	
76548		Fluegel				B	
76721		Fluegel					
76748	1972	Fluegel	2155	C-paris, new in 1972			Y
76823		Trumpet	Lafayette				N
76864		Fluegel				X	
77060		Fluegel					
77128		Fluegel	Mono-Cons	C-Paris, model 7954 on paperwork			Y
77188		Fluegel		316 on inlet			
77297		Fluegel		260 on inlet		140	
77392		Fluegel		2131 on inlet		140	
77432		Trumpet	Lafayette	1960s style case			N

77628		Fluegel				
78054		Fluegel		C-Paris, 2pc bell		N
78069		Fluegel				
78147		Fluegel		137 on inlet	B	
78172		Fluegel				
78190		Fluegel			N 140	
78193		Fluegel			N 140	
78224		Fluegel		X 113 on tuning slide		
78232		Fluegel	7950	C-Paris	N 440	N
78249		Fluegel		X111 on tuning slide		
78407		Fluegel		Cnon #3 mouthpiece		
78495		Fluegel				
78513		Fluegel				
78565	1979	Fluegel		said to be new in 1979	N	
78xxx		Fluegel		C-Paris, 2pc bell		N
78650		Fluegel			140	
78707		Fluegel		213 on tuning slide; 227 on slide 2	N	
79021		Fluegel		Bb 7 on slide	N	
79025		Fluegel				
79034		Fluegel			N	
79054		Fluegel				
79267		Fluegel				
79328		Fluegel		Bb 7 on slide inner	N	
79630		Fluegel			N	
79637		Fluegel				
79698	1970	Fluegel		C-Paris, said to be new in Fall 1970	B	
79809		Fluegel				
80016		Fluegel				
80565		Fluegel		Bb K 9 on slide		

80600		Fluegel		C-Paris, 2pc bell, H28 on slide	A	
80623		Fluegel		C-paris		Y
80652		Fluegel		C-Paris, used in 1975	K	
80759		Fluegel	2155	sold by Gretsch	A	
80924		Fluegel		D 31	A	
80961		Fluegel		14 on slide	A	
81162	1971	Fluegel		bought new 12-11-1971		
81202		Fluegel				
81218		Fluegel			A	
81223		Fluegel				
81302		Fluegel				
81303		Fluegel			A	
81342		Fluegel				
81401		Fluegel				
81434		Fluegel		C-Paris, 2pc bell		Y
81452		Fluegel		Monopole Conservatoires		
81527		Fluegel		Mono-Cons	A	
82xxx		Fluegel	2155	new in early 1970s		
82149		Fluegel				
82164		Trumpet	Lafayette	1970s		N
82192		Fluegel			A	
82274		Fluegel			A	
82363		Fluegel				
82367		Fluegel				
82375		Fluegel			N	
82448		Fluegel			N	
82485		Fluegel				
82540	c1971	Fluegel		pre-1972		
82545		Fluegel			B	

82551		Fluegel		1970s case		
82553		Fluegel		large C	A	Y
82565		Fluegel			N	
82675		Fluegel			A	
82700		Fluegel				
82752		Fluegel			A	
82760		Fluegel		3 rd trigger		
82762		Fluegel				
82780		Fluegel				
82794		Fluegel				
82856		Fluegel				Y
82875		Fluegel		C-Paris	A	
82892		Fluegel		101 on tuning slide	A	
82918		Fluegel			A	
83000	1977	Cornet		C-Paris, new in 1977		
83205		Trumpet		C-Paris		Y
83281		Trumpet		large C-Paris, 28 on inlet	Z	Y
83668		Fluegel				
83741		Fluegel				
83746		Fluegel				
83802		Fluegel			X	
83894		Fluegel				
84xxx	1974	Fluegel	Star	new in 1974 summer	B	
84290		Fluegel				
84375		Fluegel	Star	large C-Paris		Y

Thanks to Mike Keller for many of the Fluegelhorns listed here.

Dating Couesnon by Bell Inscriptions

- 1882 The earliest instruments with the Couesnon name on the bell would say "Couesnon, Gautrot et Cie" starting in 1882 when Amedee Couesnon went into partnership with his father-in-law Pierre Gautrot.
- 1888 Now Couesnon & Cie at 94 rue d'Angouleme, Paris
- 1900 Couesnon wins an award at the Paris Exposition and adds this in a banner at the top of the inscription. Any banner with an earlier date would reference other awards and would date to before 1900. At the bottom of the bell there is a grenade or pineapple with a two-digit number which is the year it was made. The example below is typical of early 20th century stampings. This one is from 1922. From the above list it would seem that only the high end Monopole model received a serial number.

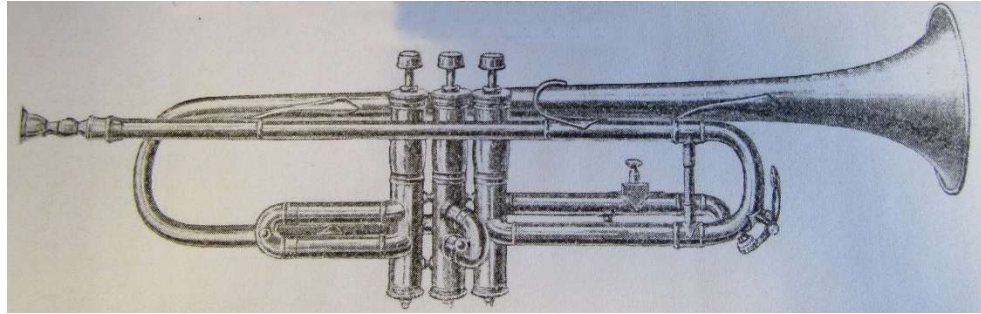


If we separate out all the instruments that have the Couesnon & Cie name and are Monopole models then we get this list. This shows the difficulty in dating by the serial numbers. The ones with dates mean that they have the grenade with the date stamp so it would appear that they started using serial numbers in the 30000 range back around 1920 then perhaps started a new sequence when they moved to their new address in 1937.

5297	1937	Tuba
5962	1938	Fluegel
12615	1949	Fluegel
12936		Trombone
17496		Fluegel
19470		Fluegel
20228		Cornet
21470		Cornet

22017		Trumpet
26504		Cornet
28625		Cornet
30122		Fluegel
30531	1921	Fluegel
33864	1922	Fluegel
34267		Cornet
36450	1923	Fluegel
37364	1923	Fluegel
40068	1924	Cornet
40470	1926	Fluegel
49565	1927	Fluegel
51281	1928	Cornet
58857	c1930	Trumpet
60945	1931	Cornet

1915 At this time Couesnon was making the “American Perfection” line of band instruments sold by Sherman Clay & Co of San Francisco, California. I don’t know how long they were selling these but the images here are from a 1915 catalog.



1927 Here is a typical bell engraving for a Monopole model in 1927



1938 The same bell engraving is found as late as 1938 on this Monopole model yet we now have the new address and a low serial number that would indicate a new number sequence after the move. The lowest serial number I have found at the new address is #2207 on a trumpet.



1945 After WWII the bell stamping becomes less complex and the top banner has changed yet they are still using the date stamp in the grenade.



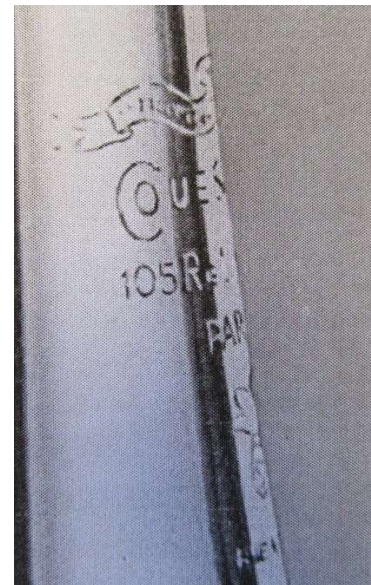
1947 The bell stamping loses its banner and the new logo has the "C" wrapped around the "o" with the "& Cie" being dropped from their name. The loss of the banner may be cost cutting for the less expensive models.



1951 On this instrument from 1951, the top banner is back and the “Made in France” is added at the bottom; perhaps as a requirement for US imports.



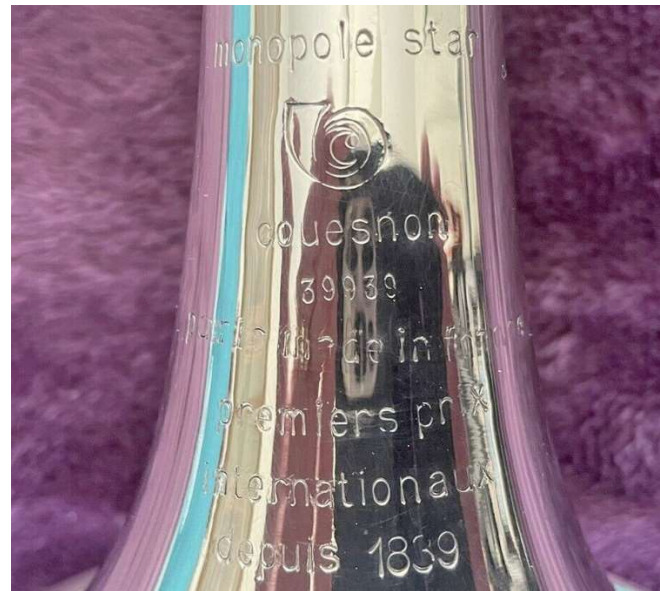
1956 The bell marking from 1951 remains the same. The right photo is from a c1960 catalog with a “5” showing in the grenade so perhaps from the late 1950s. 1957 is the newest grenade date I have found; they seem to have dropped this soon after.



1960s The next bell stamping gets even simpler with the banner, address, and date stamp being dropped. This style continues into the late 1970s when Gretsch was still importing them.



c.1980 The bell has what I refer to as the snail logo found on this Monopole trumpet in C, #39939.



1980s Here is a later snail bell logo probably from the late 1980s; now etched rather than stamped.



Dating Couesnon Based on Known Purchase Dates

If we separate out just instruments with known purchase dates then we get this list. The dates jump around a little but this could be due to people trying to remember when they bought it or old stock being bought at a later date.

63242	1967	Fluegel		said to be new in 1967
71523	1969	Fluegel		used in 1976
73054	c1963	Fluegel		C-Paris, trigger, owned by Roger Ingram
74178	1969	Fluegel	2155	said to be new March 1969
74228	c1970	Fluegel		
76xxx	1975	Fluegel	Star	
76748	1972	Fluegel	2155	C-paris, new in 1972
78565	1979	Fluegel		said to be new in 1979
79698	1970	Fluegel		C-Paris, said to be new in Fall 1970
81162	1971	Fluegel		bought new 12-11-1971
82xxx		Fluegel	2155	new in early 1970s
82540	c1971	Fluegel		
83000	1977	Cornet		
84xxx	1974	Fluegel		

Gretsch stopped importing in 1978 and the highest numbers found around 85000 probably date to this time. The exceptions to this dating seem to be the Monopole and Triebert Moderne models which have serial numbers into the 43000 range in the late 1970s.

40486		Fluegel	Mono-Star	1970s case, 1 pc bell, 3 rd slide trigger
40998		Fluegel	Mono-Star	1970s case
41074		Fluegel	Triebert Moderne,	used in 1982
41414	1978	Fluegel	Mono-Star	new in 1978
42947		Cornet	Monopole	C-Paris, 1970s case

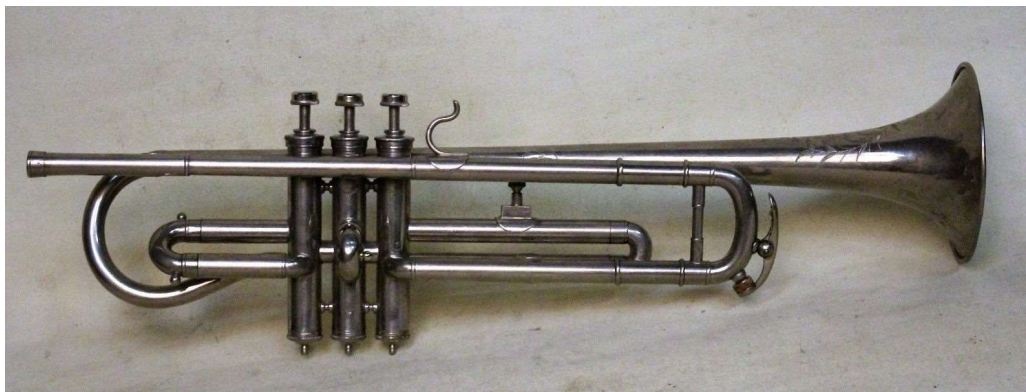
Dating Couesnon Based on Instrument Examples

This last section will show instrument examples from advertising or with date stamps that may help in dating your Couesnon horn.

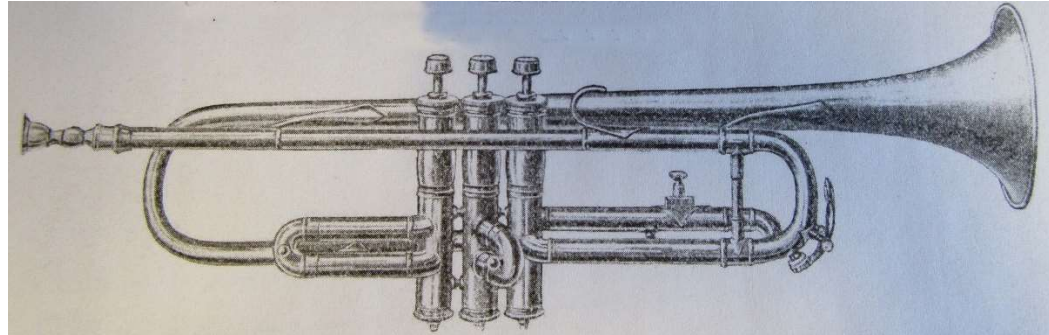
1907 Trumpet



1910 Symphony Trumpet



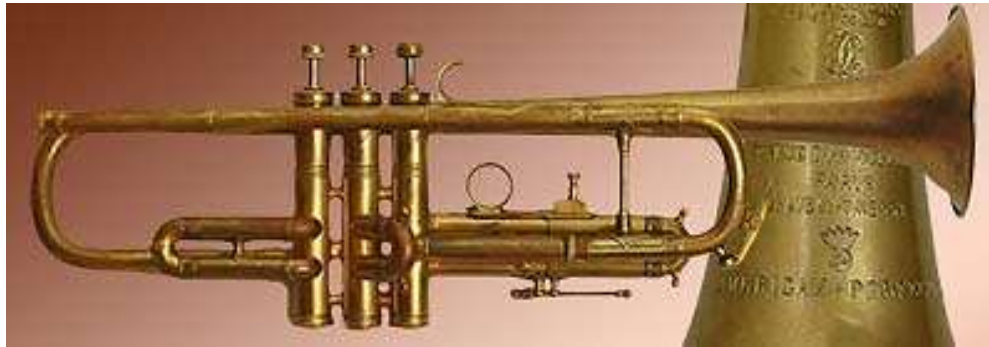
1915 American Perfection Trumpet



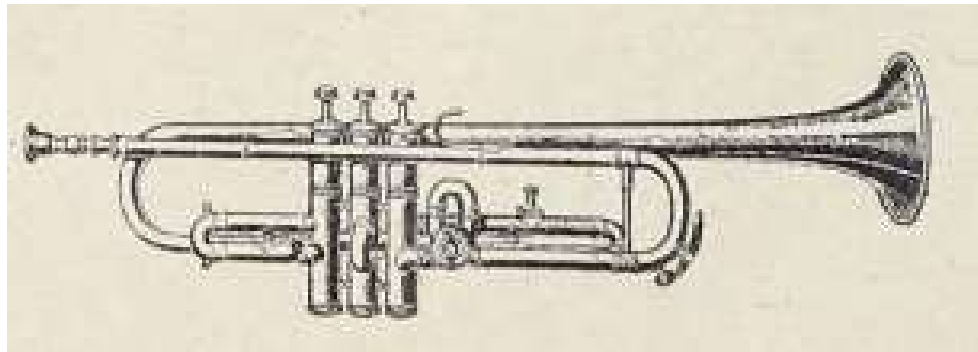
1919 Eb Bass Trumpet



1924 American Perfection Trumpet



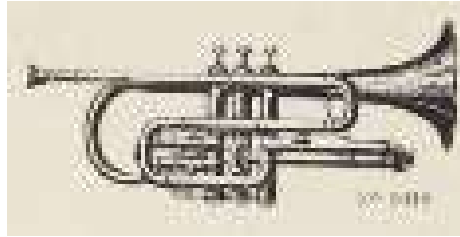
1924 Monopole Trumpet



1924 Monopole Cornet serial #40068



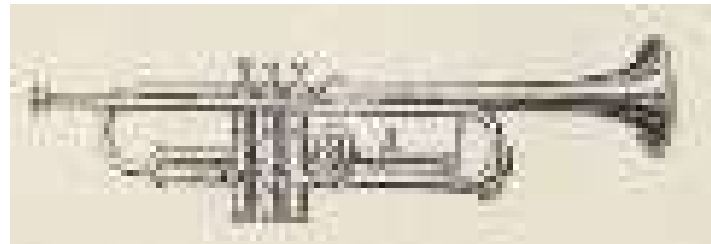
1924 Cornet from catalog with S-Lead pipe



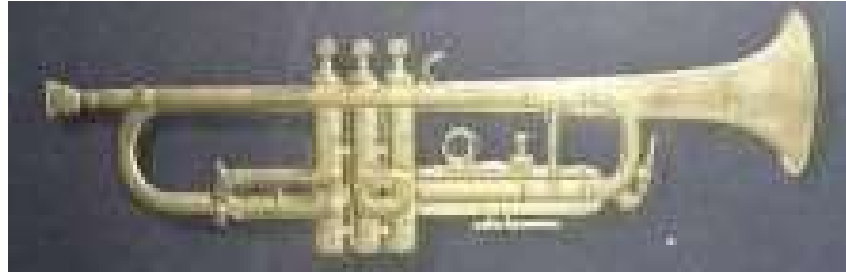
1924 example



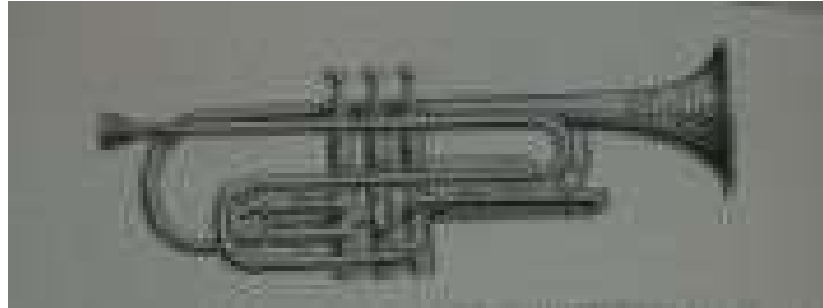
1924 Trumpet from catalog



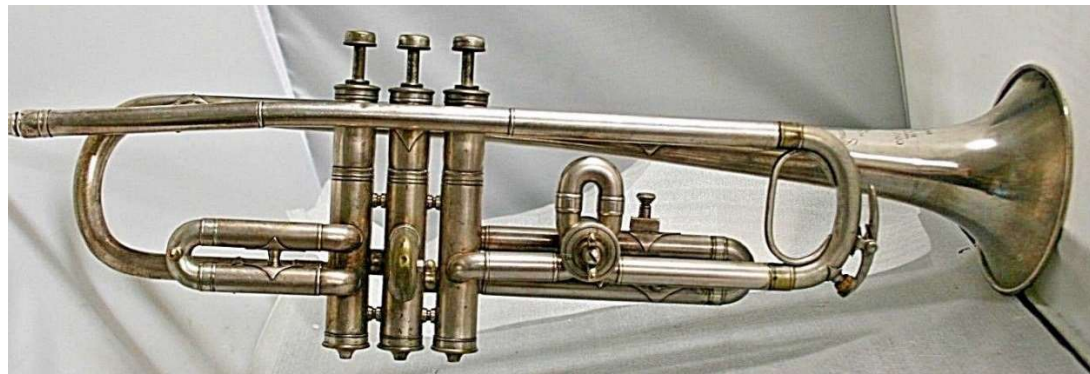
1926 Trumpet from catalog



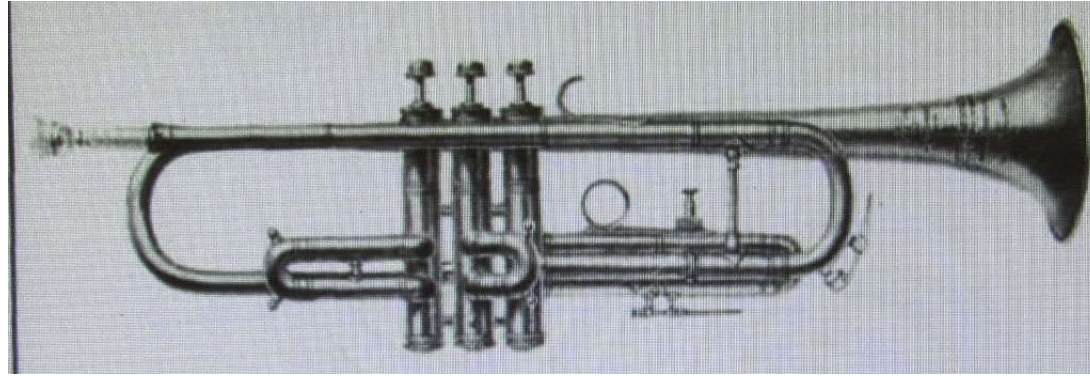
1926 Cornet from catalog



1927 Trumpet



1927 Trumpet from catalog

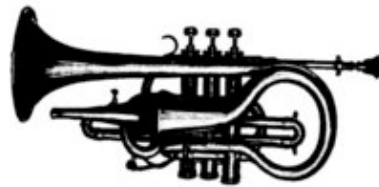


1928 Monopole Cornet #51281



1934 Cornets

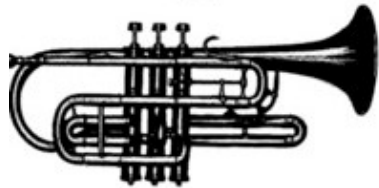
CORNETS A PISTONS



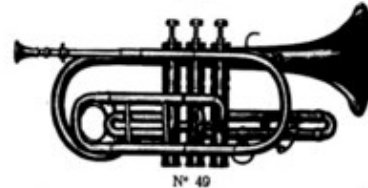
N° 26



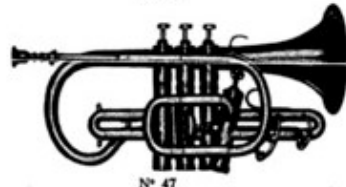
N° 37



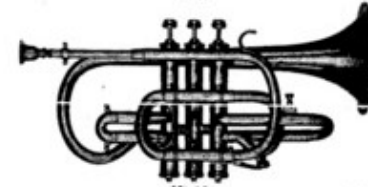
N° 40



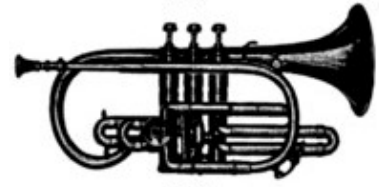
N° 49



N° 47



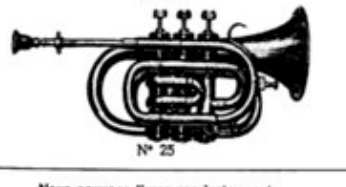
N° 18



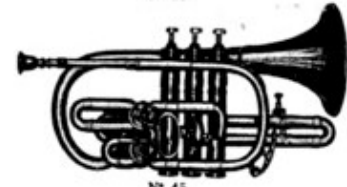
N° 53



N° 20



N° 25



N° 45



N° 55

Nous pouvons livrer nos instruments
NICKELÉS, ARGENTÉS, DORÉS
aux pages 49 et 50, vous trouverez les suppléments pour
ces opérations

Voyez à la page 12 notre nouvelle série artistique MONOPOLE - CONSERVATOIRE

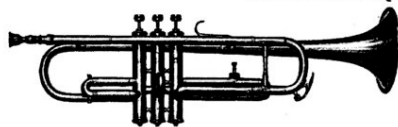
1934 Trumpets

16

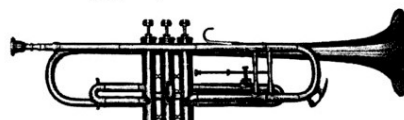
TROMPETTES D'HARMONIE

avec Bornes à toutes les Coulisses

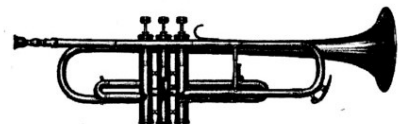
(CARACTERISTIQUES GENERALES, page 14)



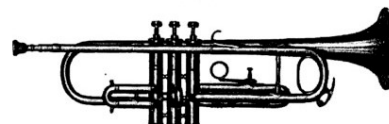
N° 91



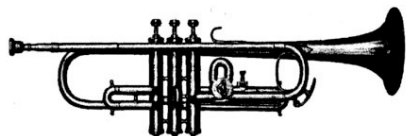
N° 94



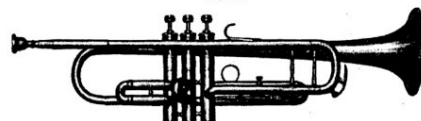
N° 95



N° 107



N° 96



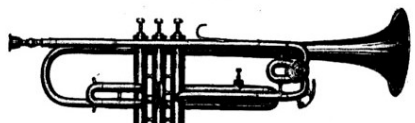
N° 101



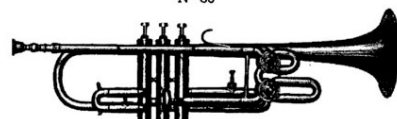
N° 97



N° 86

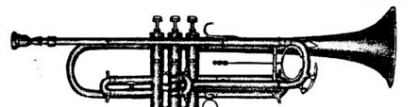


N° 82

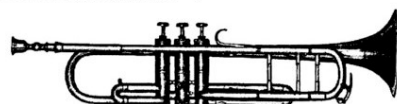


N° 84

MODELES « MONOPOLE-CONSERVATOIRE »



N° 117



N° 111

« Sincères félicitations pour votre excellente trompette « COUESNON » qui me donne entière satisfaction ».

Marcel LAFOSSE,
Ex-trompette solo de l'Opéra-Comique de Paris,
Cornet solo de la Boston Symphony Orchestra.

Paramount Trumpet #5235 with same design as Monopole trumpet from 1934 above.



1945 Trumpet in C



1947 Trumpet in C



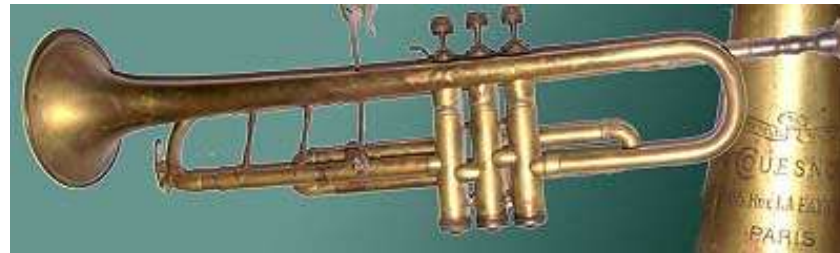
1949 Fluegel Horn #12615



1950 Trumpet



1951 Trumpet



1951 Trumpet



1956 French Horn



1959 Fluegelhorn ad

for color and balance

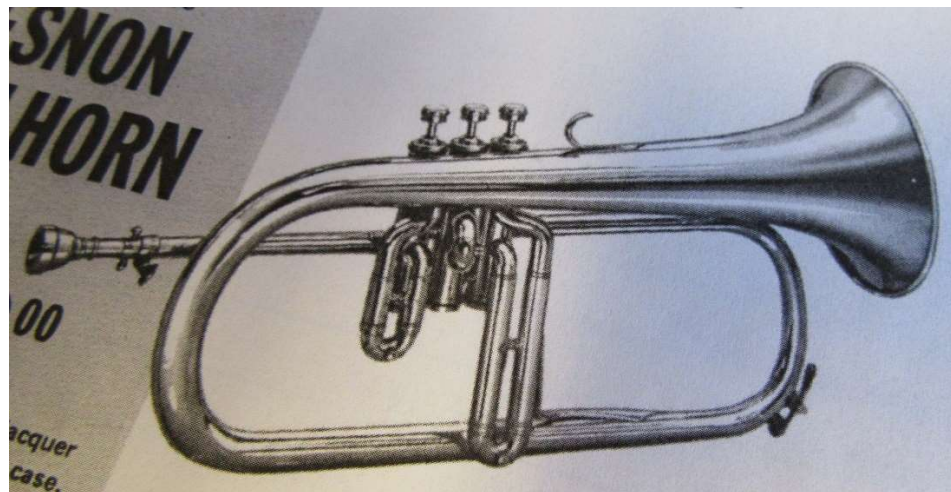
COUESNON FLUEGELHORN

It's the only one you can
get and it's the only
one you can't get.
It's the only one you
can't get and it's the
only one you can't get.
It's the only one you
can't get and it's the
only one you can't get.

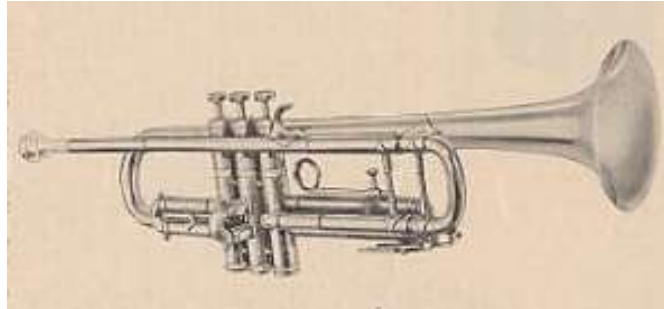
Price
\$170⁰⁰

Fluegelhorn, 100% silver
Body, 100% silver

1959 Fluegelhorn ad



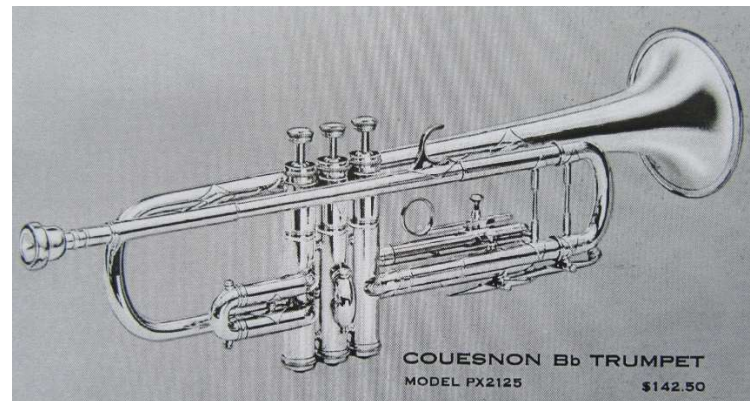
1960 Trumpet from Gretsch ad – this has the new C pinky ring
I have found this ring on a cornet as early as 1957.



Trumpet matching the 1960 ad – serial #46257



1960 Trumpet model 2125 from Gretsch catalog



Trumpet model 2125 – serial #66690 – this may have a modified tuning slide



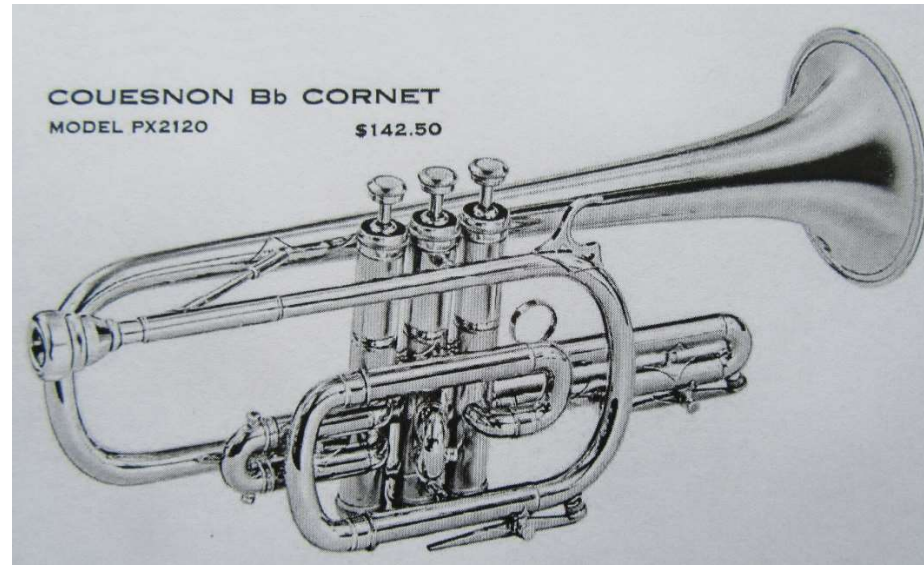
Trumpet #74043 with same design



Renault model Trumpet with serial #33616 has the same design except for forward water key



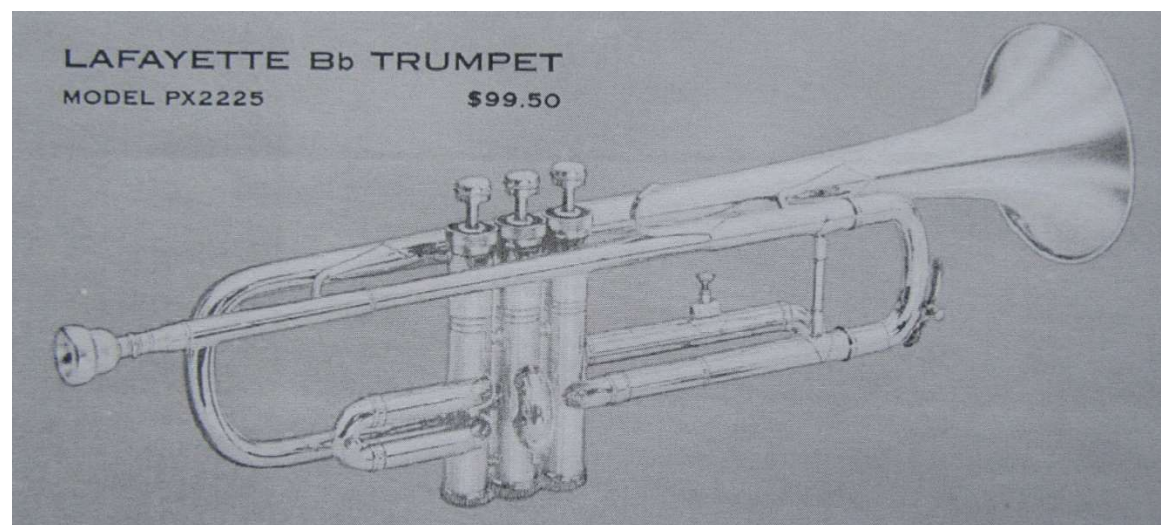
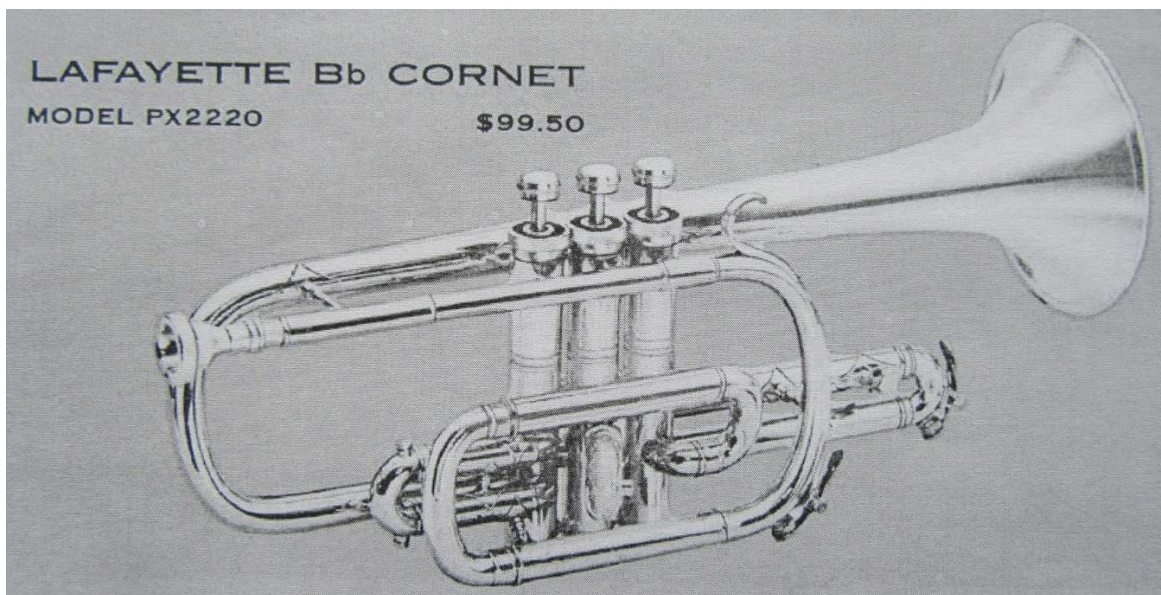
1960 Cornet model 2120 from Gretsch catalog



Cornet #51474 with similar design – same design found on another cornet dated 1957



The 1960 catalog also has the “New” Lafayette model 2220 Cornet and 2225 Trumpet



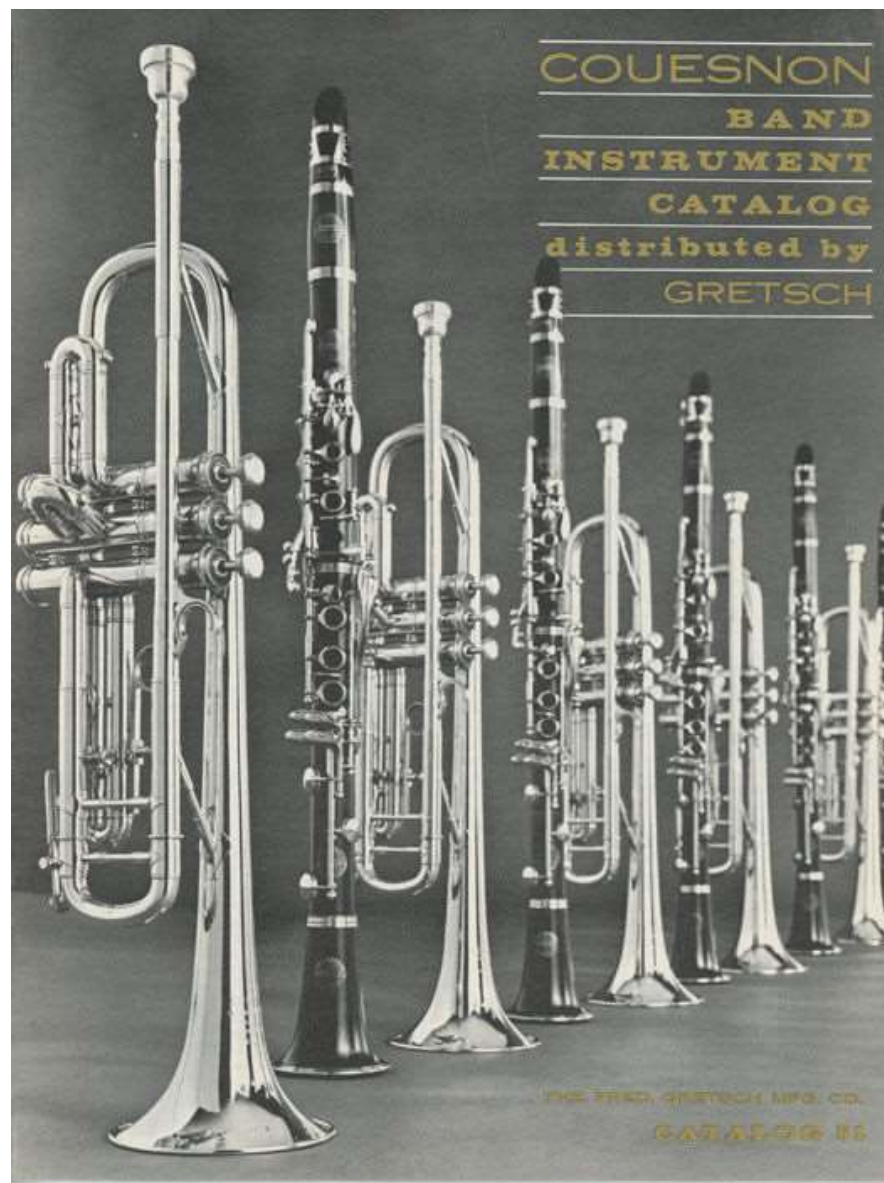
Lafayette Trumpet serial #76823



Renault model Trumpet serial #39458 uses the same design



1961 Gretsch catalog Trumpets



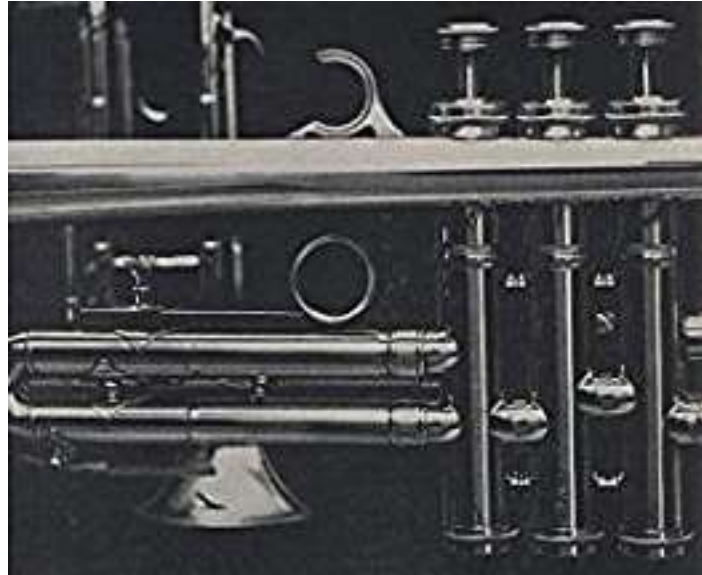
1961 Trumpet from ad



1963 ad for Monopole Trumpet



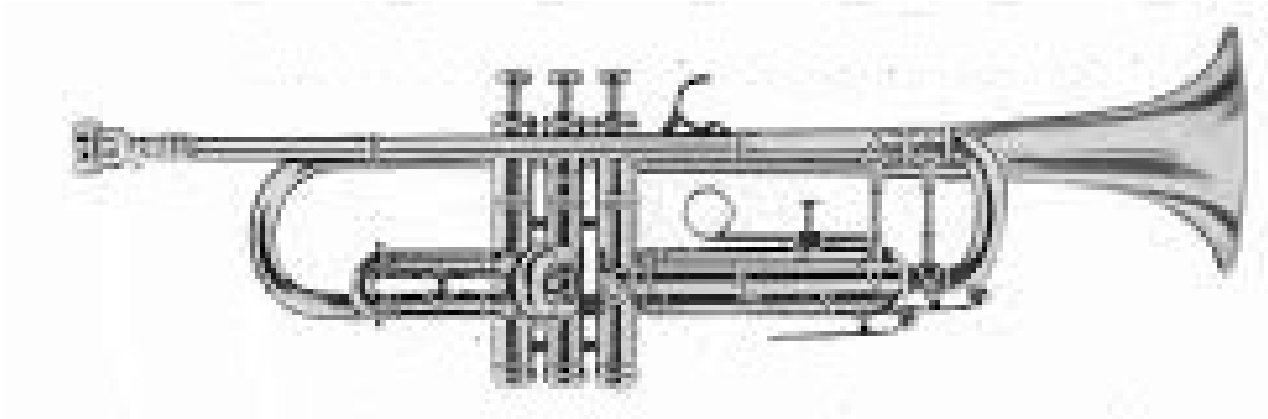
1963 Trumpet ad



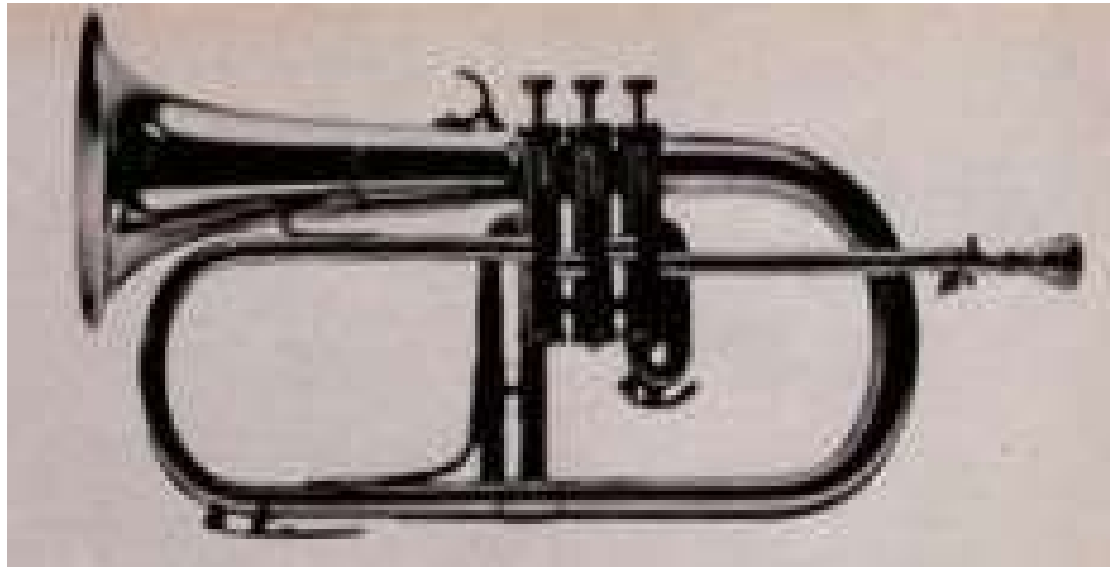
1965 Piccolo Trumpet



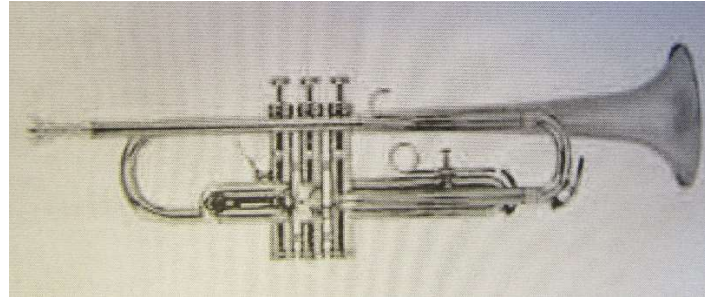
1967 Trumpet ad



1969 Fluegelhorn



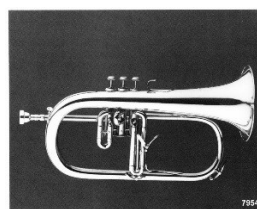
1970 Monopole Trumpet



Star model Trumpet with similar design – serial #75257



1970s Monopole Star Fluegelhorn – new one-piece bell design



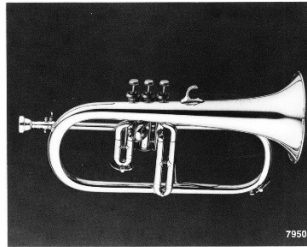
**Couesnon
Fluegel
Horns**

Model 7954 — Monopole Star Fluegel Horn
A truly new instrument featuring one piece bell and tone bow, the Monopole Star Fluegel Horn is an exciting new professional instrument. Its 3rd valve "triggers" the "accusave".
Couesnon Fluegel Horns are the most popular Fluegel in the world. Available in silver as the Model 7955 Monopole Silver Star.

Matching horn – serial #40486



1970s Star Fluegelhorn with two-piece bell



Model 7950—Couesnon Star Fluegel Horn
For that rich, mellow tone that is missing in your brasses, the Couesnon Fluegel Horn provides distinct color and balance in the trumpet and cornet sections. Its warm tones also find great popularity among stage bands and with recording artists.
More players own Couesnon Fluegel Horns than all other makes combined. Yes, every trumpet player should own a Couesnon Fluegel Horn. Available in silver as the Model 7951 Couesnon Silver Star.

1972 Conn Fluegelhorn match – did they make them for Conn?



Star model Fluegelhorn with serial #84375 is one of the highest numbers found and probably dates to 1978



Monopole Star trumpet in C with #39939 with later snail logo so c.1980. This has replaced water keys and a Pilczuk leadpipe.

